



ibuyer.hk

Welcome to the ibuyer.hk software installation manual

- This is an installation guide for all of our software V3.58 onward. For earlier version please refer to the old manual.
- For general instruction of our software, please refer to the separate general user manual.
- For the using of individual software, please refer to the specific user manual for individual software.
- For the platform, database structure and design change of software, please refer to the technical manual.
- For our cloud edition, skip this manual as we already set up database in Microsoft Azure data center for user.

Table of content

01. Software copy.
02. OS requirement.
03. Software pre-requisite.
04. Installation won't start.
05. Hardware requirement.
06. Network requirement.
07. Standalone installation in one PC.
08. Multi user installation in company network LAN.
09. Activation key.
10. Uninstall.

Software Copy

1. By downloading from our site www.ibuyer.hk.
2. We are now distributing our software in the Microsoft Installer Format - .exe file format. User will download a single file in this file name format, for example: MerchanNetEN.exe / CostingNetEN.exe / TextileEN.exe.



OS Requirement

1. Our software only works in Windows Operating System.
2. Windows OS version; Windows 2000, Windows XP, Vista, Windows 7, Windows 8, Windows 10, Windows Servers
3. Windows Server is option only; user may use our software with or without server.

Software Pre-requisite

1. Starting from version 10.10, we have embedded The Microsoft Access 2007 runtime as pre-requisite. If your PC already has Access 2016, 2013, 2010 or 2007 already installed, the installer will detect automatically. Then it will skip the pre-requisite installation automatically. Instead, without any Access runtime version, it will perform the Access runtime installation before the product installation being started.
2. Once the installation of the pre-requisite is required and started automatically, please let it finish and undergoes a reboot of your Windows OS in order to continue the product installation.
3. Please follow the installation dialogue accordingly. It might have 1st (pre-requisite) and 2nd (product) stage of installation.



Installation won't start

1. Mostly likely your PC doesn't have an Access Runtime being installed prior to install ibuyers' software.
2. If your PC has the Microsoft Access 2016, 13, 10, 07 full version being installed, you will not need the Access Runtime.
3. If not, please download and install the **MS Access Runtime** from the Microsoft site and select your preferred languages.
4. The installation requires administrator right of your PC, otherwise, it won't be able to continue the installation.

Hardware Requirement

1. CPU at 1.2GHz or higher.
2. Memory at 1 GB or higher.
3. 12GB of hard disk.
4. 100mb Fast Ethernet (1000mb or 1 GB is better)
5. Local Area Network - Ethernet (802.11. standard wired)
6. Screen resolution – 1280 x 800 monitor size at 13.3 inch or bigger.
7. Wired or wireless LAN is required for multi user access set up.
8. If wireless LAN is being used, MMIO, gigabit LAN and 802.11 /n are recommended.

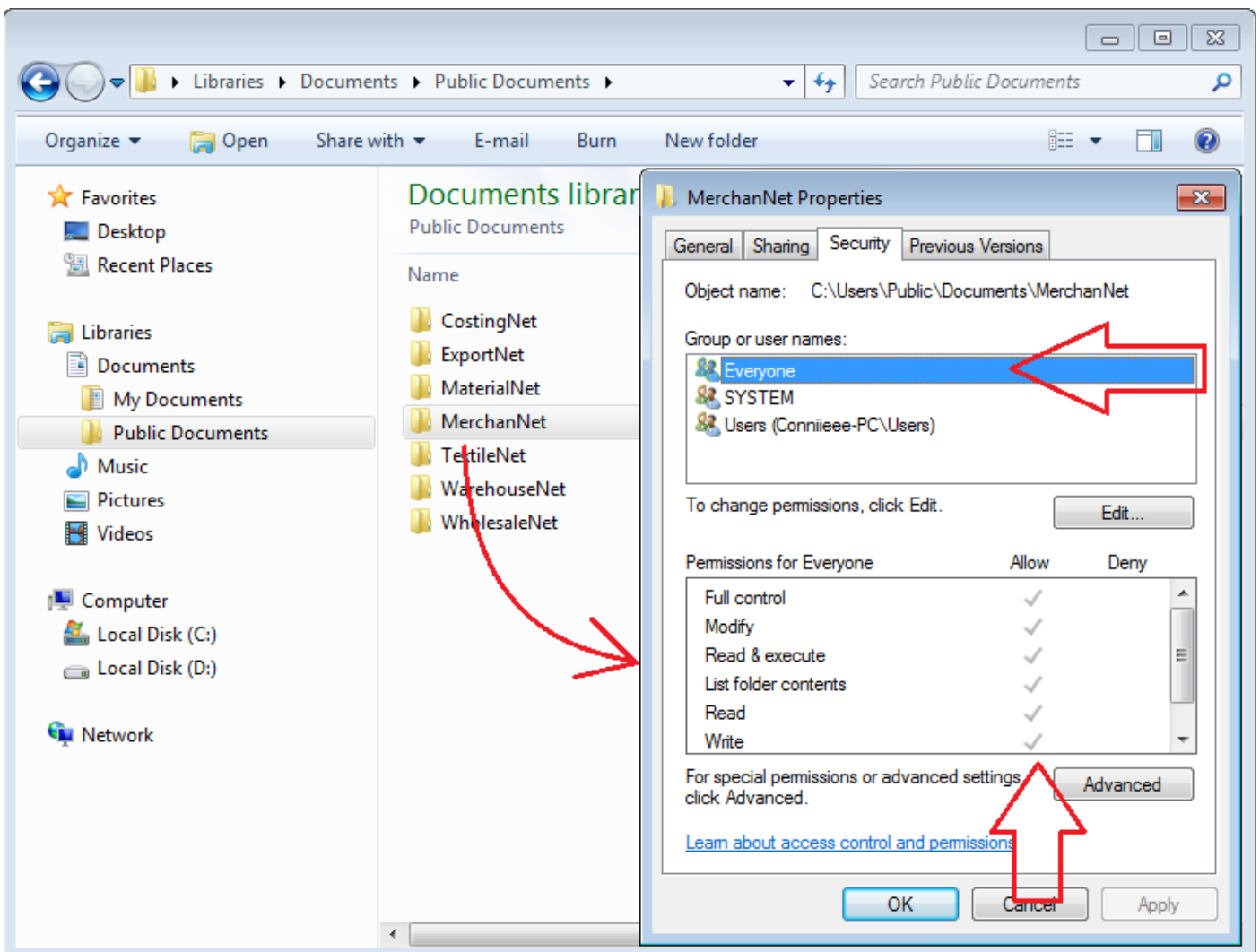
Stand-alone installation

1. Once you have download and save the installer file (.exe - suggest save it into your desktop), double click it and installation will begin, right click and select install will do the same.
2. If the PC does not have Access 2016, 13, 10, 07 full version or runtime being installed, the installation won't start.
3. If it starts, please follow the installation dialogue's instruction to continue the installation process.
4. During the installation, please click install, yes, finished on dialog to carry on set up steps.
5. This setup will install our software in the folder location C:\ so that users will be able to use it.
6. For example; it be installed at C:MerchanNet or C:\CostingNet
7. The entire software data file, database, working files, security files will be in this folder created during installation.

Multi user's installation

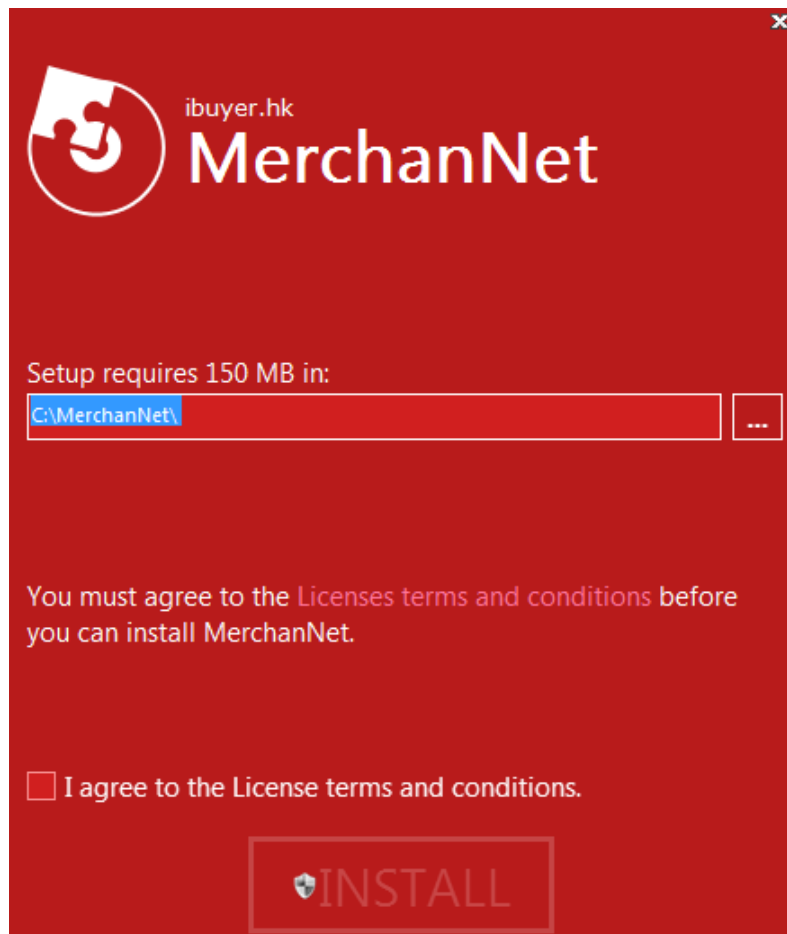
1. Way to share our database
 - **By using a network share folder**, install all the working files into a network share folder
 - We recommend user to share the database **by using a network share folder**, this is the easiest method and no additional software and hardware required.
 - It is essential that all PC inside your network LAN to **mapped** the share folder location prior to this (**Z:\MerchanNet**)
2. Principle of sharing our database in a network share folder (public share folder)
 - It is exactly the same as sharing a Microsoft Word or Excel file in a network share folder; except you are placing the data file of our software into your network share folder. You have to do this by **Select Installation Folder** during setup.
3. Multi users installation procedures
 - First you have to create a share folder in your network or select any share folder already in your network.
 - It must be able to browse, read, write, **full control** by all PC in the network – by file explorer or network place.

- Once you have a destination folder to carry out installation, please start the installation at anyone of your PC. During the installation, a dialogue will pop up and you may select installation folder location. At multi user installation situation, please browse the share folder location supposed to hold all the working files including the database data file. Continue to finish the installation procedure for this PC.
- Please make sure the **Credential has been logon** to the Mapped drive, otherwise, the drive may be invalid during install.
- Then you may go to another PC to proceeds the setup again. Continue to finish rest of the PC inside your office, and so you are good to go with a sharing database with multi user access.
- The share folder name must be in a single word, for example Share Folder is not good. It should be Sharefolder.
- The share folder path for all PC must be the same, in case of a **mapped drive**. Let say **Z:** connected for all PC.
- If it is installed into a share folder and the product does not open, please right click and select the property of the share folder, select the security tab, check the permission for all users, see if it is **Full control** checked.





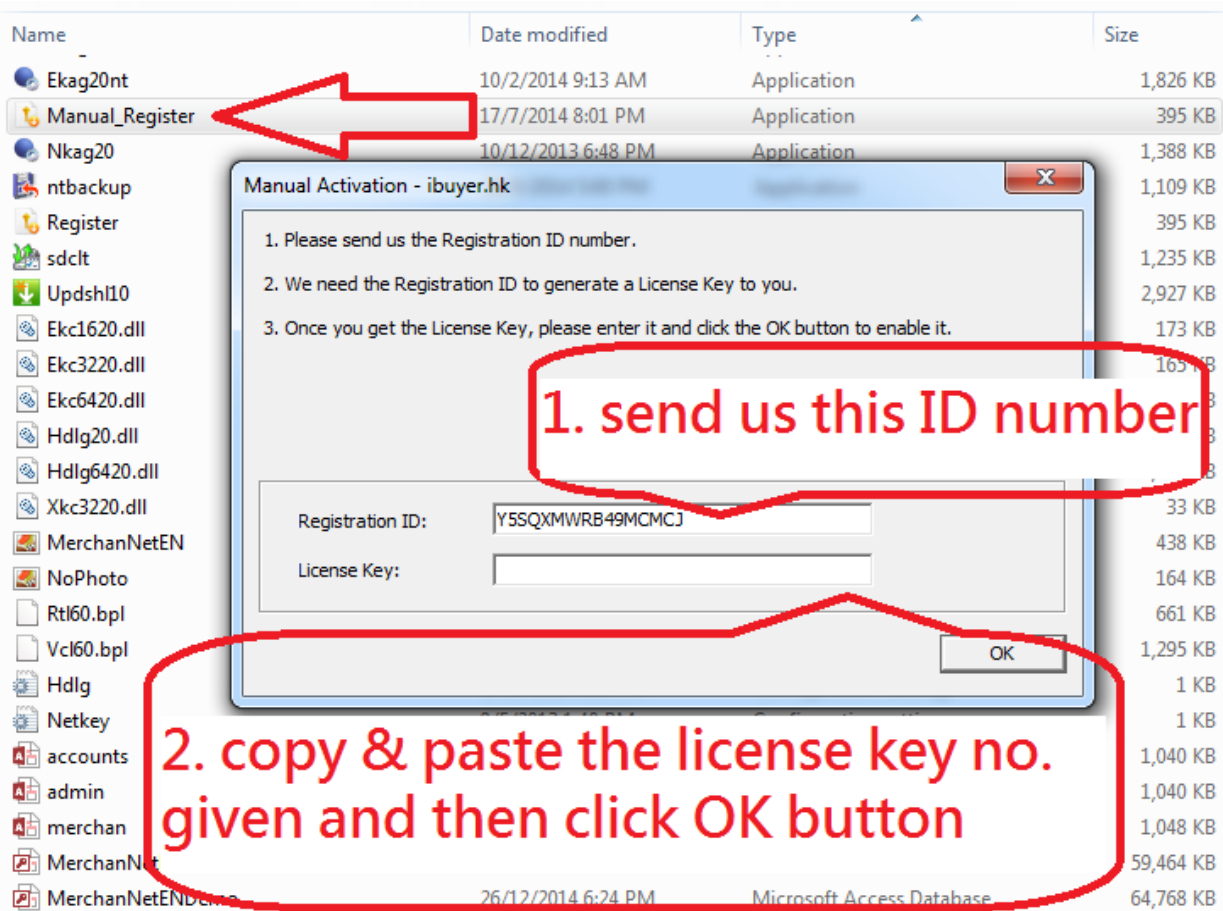
During set up, it will pop up with select installation folder dialogue, please select the share folder in your LAN by the browse button.



Activation key

1. In all of our software, there is an admin button. This contains some simple database administrative functions; including register dialog for inputting the activation key (License Key).
2. Like many other software in the market, our software starting with free edition. (When user first open the product, Free Edition is began by default). If user decided upgrading it to the professional edition later, user may purchase the activation key (License Key) and so they can upgrade it and continue to use the professional features.
3. This will let the database keep all the data that inputted to the database remain intact. Customers don't need to re-type all useful data again and continue to use our database software.
4. In case the auto activation is not working. IE. No internet connection, there is a Manual_Register.exe application in the working folder. User can double click this application and input the license key provided by us to enable the product.
5. – license key (for off-line activation)
6. – activation key (for online activation)

If you double click the Manual_Register application in the working folder, below dialog will pop up, send us the registration ID number and we will issue a License Key for user to enable the product manually.

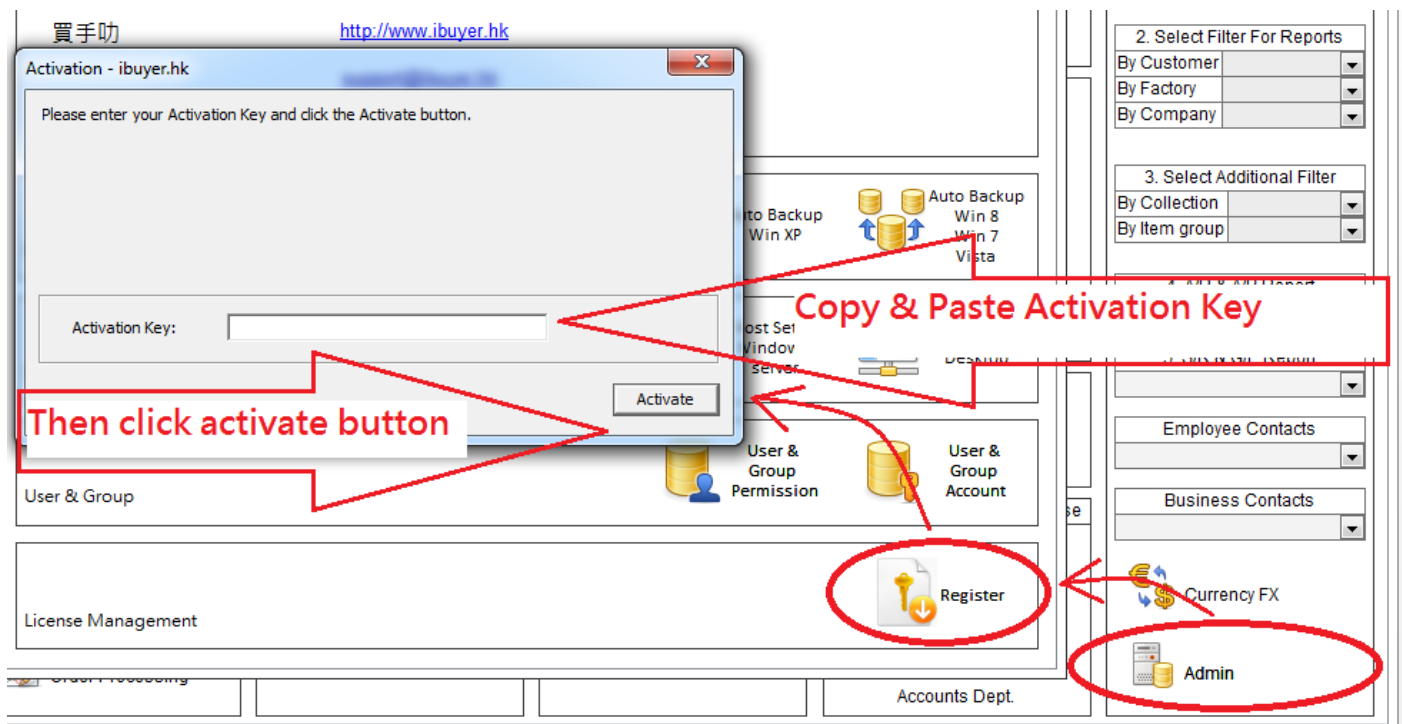


Name	Date modified	Type	Size
Ekag20nt	10/2/2014 9:13 AM	Application	1,826 KB
Manual_Register	17/7/2014 8:01 PM	Application	395 KB
Nkag20	10/12/2013 6:48 PM	Application	1,388 KB
ntbackup			1,109 KB
Register			395 KB
sdclt			1,235 KB
Updshl10			2,927 KB
Ekc1620.dll			173 KB
Ekc3220.dll			165 KB
Ekc6420.dll			33 KB
Hdlg20.dll			438 KB
Hdlg6420.dll			164 KB
Xkc3220.dll			661 KB
MerchanNetEN			1,295 KB
NoPhoto			1 KB
Rtl60.bpl			1 KB
Vcl60.bpl			1,040 KB
Hdlg			1,040 KB
Netkey			1,048 KB
accounts			59,464 KB
admin			64,768 KB
merchan			
MerchanNet			
MerchanNetEND	26/12/2014 6:24 PM	Microsoft Access Database	

1. send us this ID number

2. copy & paste the license key no. given and then click OK button

If you click the Admin button, register button on the dashboard, an auto activation dialog will pop up. Copy & paste the activation key given by us and then click the activate button. So that the product will be activated.



買手叻 <http://www.ibuyer.hk>

Activation - ibuyer.hk

Please enter your Activation Key and click the Activate button.

Activation Key:

Activate

Copy & Paste Activation Key

Then click activate button

Register

Admin



Uninstall

1. Please double click exactly the same .exe installer file to uninstall our software.
 2. User may also go to the control panel > programs and features > select our software and uninstall.
 3. **Warning; once you uninstall our software, all the data (input by users) will be removed simultaneously.**
 4. **Please make a backup copy of the data file just in case you need it in the future.**
- That's it for our installation manual; you may refer to our support forum for more FAQ and information's.